

Pro-Par Classic Gen II Landing Gear Legs

Engineered for Superior Strength & Reliability

Pro-Par Classic Gen II Landing Gear Legs are the value-driven solution for high-quality performance and proven reliability.

The Classic Gen II Legs are built with patented technology that keeps the gears constantly meshed to ensure smooth shifting even in harsh conditions.

KEY FEATURES

- Patented Constant Mesh Gearbox design eliminates high-to-low shifting problems and slip cranking even in cold weather
- Fixed nut for added stability
- Corrosion-resistant black powder coating
- High-strength ductile iron gears
- Universal mount
- 5-year warranty



Order on myauroraplus.com

 **Aurora Parts**

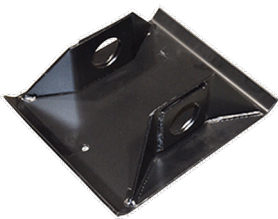
Pro-Par Classic Gen II Part Numbers

Individual Landing Gear Legs

Part Number	Description	Foot Description
PROLG100G-17HT-1	17" Travel Right-Hand Non-Gear Leg	Low Profile Removable Cushion Foot (RCF)
PROLG100G-17HT-2	17" Travel Left-Hand Gear Leg	Low Profile Removable Cushion Foot (RCF)
PROLG100T1-17HT-1	17" Travel Right-Hand Non-Gear Leg	Low Profile Sand Shoe
PROLG100T1-17HT-2	17" Travel Left-Hand Gear Leg	Low Profile Sand Shoe
PROLG100T-17HT-1	17" Travel Right-Hand Non-Gear Leg	High Profile Sand Shoe
PROLG100T-17HT-2	17" Travel Left-Hand Gear Leg	High Profile Sand Shoe
PROLG100T18-17HT-1	17" Travel Right-Hand Non-Gear Leg	Heavy-Duty Low Profile Foot with Solid Axle
PROLG100T18-17HT-2	17" Travel Left-Hand Gear Leg	Heavy-Duty Low Profile Foot with Solid Axle

Landing Gear Leg Sets

Part Number	Includes	Description	Foot Description
PROLG100G-17HT	PROLG100G-17HT-1 PROLG100G-17HT-2	17" Travel, Right-Hand Non-Gear Leg, Left-hand Gear Leg	Low Profile Removable Cushion Foot (RCF)
PROLG100T1-17HT	PROLG100T1-17HT-1 PROLG100T1-17HT-2	17" Travel, Right-Hand Non-Gear Leg, Left-Hand Gear Leg	Low Profile Sand Shoe
PROLG100T-17HT	PROLG100T-17HT-1 PROLG100T-17HT-2	17" Travel, Right-Hand Non-Gear Leg, Left-Hand Gear Leg	High Profile Sand Shoe
PROLG100T18-17HT	PROLG100T18-17HT-1 PROLG100T18-17HT-2	17" Travel, Right-Hand Non-Gear Leg, Left-Hand Gear Leg	Heavy-Duty Low Profile Foot with Solid Axle



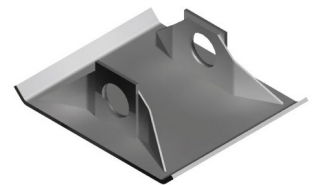
Low Profile Sand Shoe



High Profile Sand Shoe



Low Profile Removable
Cushion Foot (RCF)



Heavy-Duty Low Profile
Sandshoe

Order on myauroraplus.com

 **Aurora Parts**

